



AI VMS Server

64-channel monitoring
Large-scale applications

AI VMS Server is equipped with high efficiency AI chip, cutting-edge VMS technology and an expandable rack-mount server that support 64 channels for surveillance system. It provides users a more comprehensive solution. AI VMS Server is suitable for large-scale areas such as airports, factories, schools, retail stores, office buildings, and can also improve the safety of smart cities and roads/traffics monitoring.

X86 Server

- ▶ 64 channel recording
- ▶ 12-bay hard drive
- ▶ Support ONVIF/RTSP video input
- ▶ Support Master/Slave
- ▶ Third party integration



AI VMS

- ▶ AI detection: human, vehicle, smoke, fire and cross-line
- ▶ Local/Remote IP configuration
- ▶ Dashboard
- ▶ Health Doctor
- ▶ LINE/Email notifications
- ▶ E-Map





spark
Italian inSight

Features



high-efficiency AI chip

Argo is a highly efficient surveillance system software, ensuring high-quality service. Our system adopts Kneron's AI chip, enabling precise and efficient detection.



Various and accurate AI detection functions

Supports human, vehicle, smoke*, and fire* detection. With diverse AI detection functions, personnel can complete tasks easily.

*Optional



Analog cameras seamlessly upgraded to AI function

There are still over 60% analog cameras today. With this device, existing cameras can be easily upgraded to AI functionality without replacement.



Health Doctor

Detect the abnormal signal, sent out notification and provide basic troubleshooting procedures. Even cameras in distant, personnel can find out and take action immediately.



Features



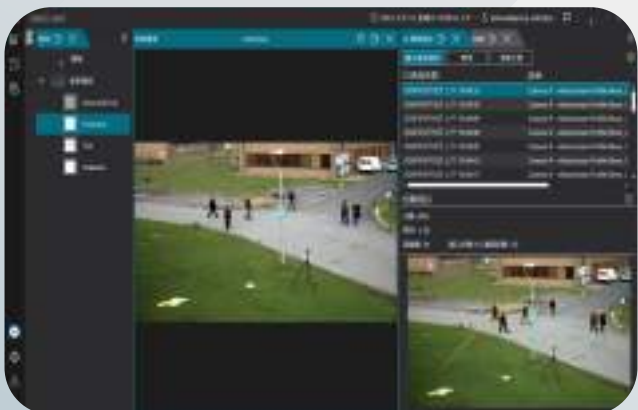
Alert Notification

Integrates with E-mail / LINE Notify for instant notifications via E-mail or LINE app during events, keeping personnel informed and enabling prompt off-site action to mitigate risks.



Advanced event configuration

Enhances security by reducing false alarms with multi-feature alert conditions (AND/OR) and linked cameras for different perspectives. It also supports customizable alarm procedures for better accuracy.



Cross-Line Detection Cross-Line Counting

Argo provides cross-line detection and counting capabilities, allowing for precise detection, multiple counting, data analysis, and real-time monitoring, effectively adapting to a wide range of security management requirements.



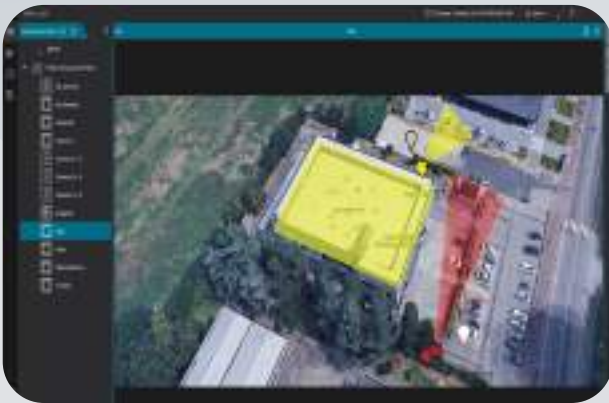
Dashboard

The Argo software can visualize camera image data, presenting the information in a graphical manner. Users can adjust the data dashboard according to their needs and preferences, offering a high level of customization and flexibility.



spark
Italian inSight

Features



E-map

Supports multi-layer electronic maps with configurable device position and angle to simulate real surveillance scenario. When an event occurs, relevant cameras will automatically trigger alerts and display real-time footage, aiding personnel in responding swiftly to incidents.



Vehicle Access Control

Argo supports LPR cameras and eTags, offering automated access control including real-time license plate registration and classification. Users can make notes for specific vehicles and create customized lists (e.g., VIP, blacklists, whitelists) for more effective access management.



Advanced User Management

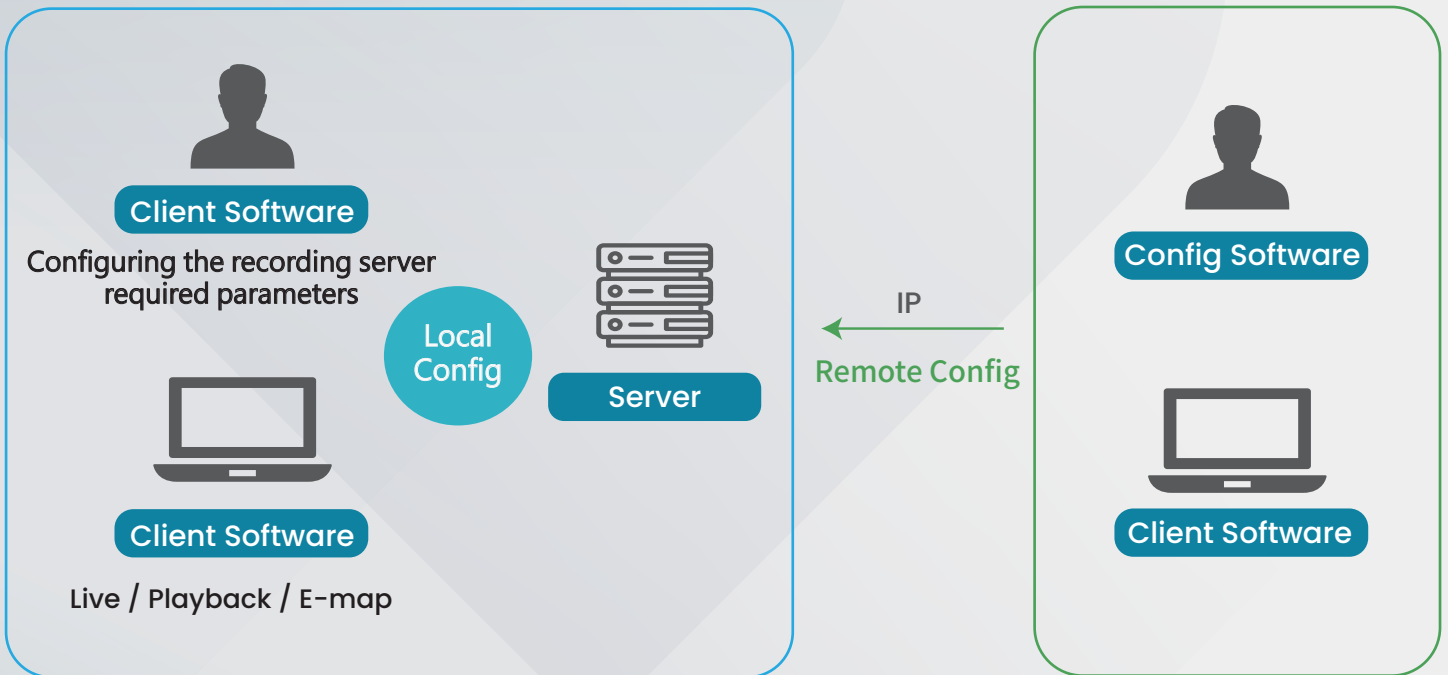
Administrators can tailor user privileges as required, including by device, functions, and time schedules. Furthermore, settings can be stored in groups for swift application of the same privileges to new users.



System

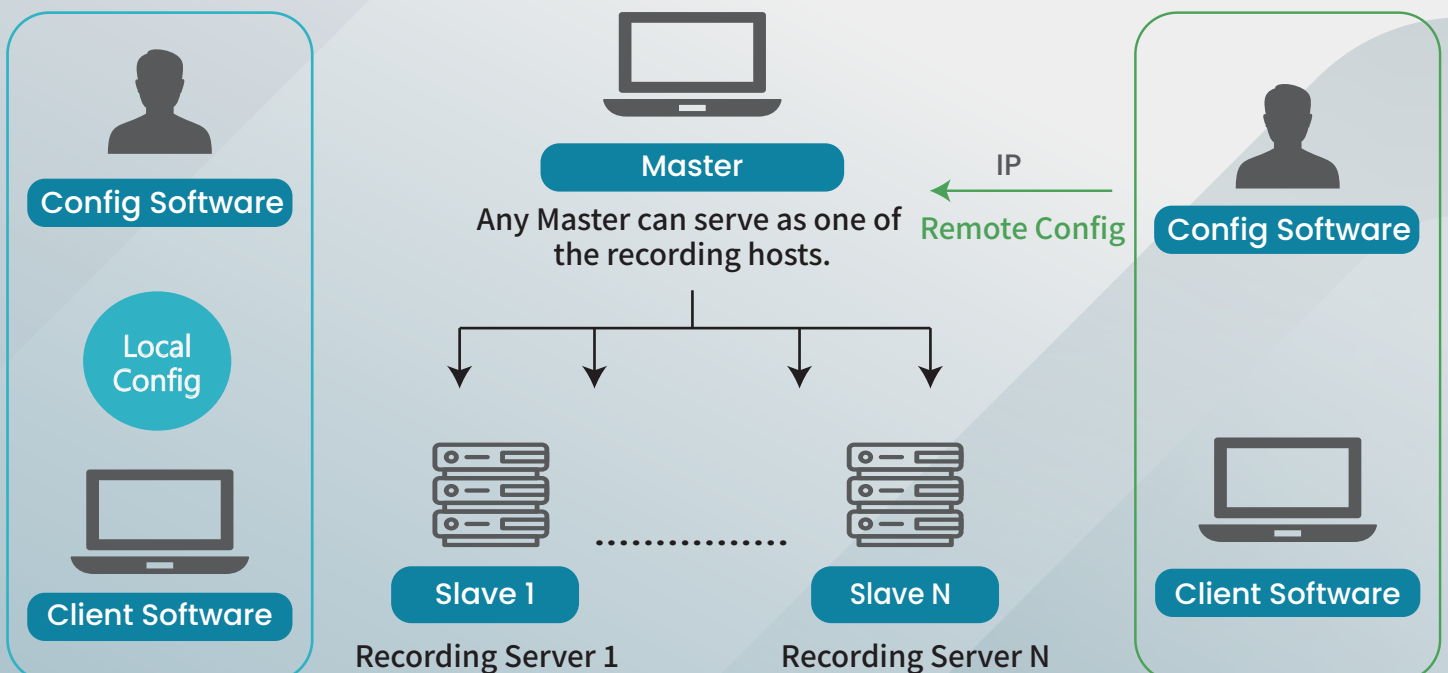
Standalone

Users can configure the required parameters locally/remotely.



Master/Slave

In addition to the Master server, users can easily add several servers as slave servers. With this structure, users can monitor and manage multiple screens at the same time.

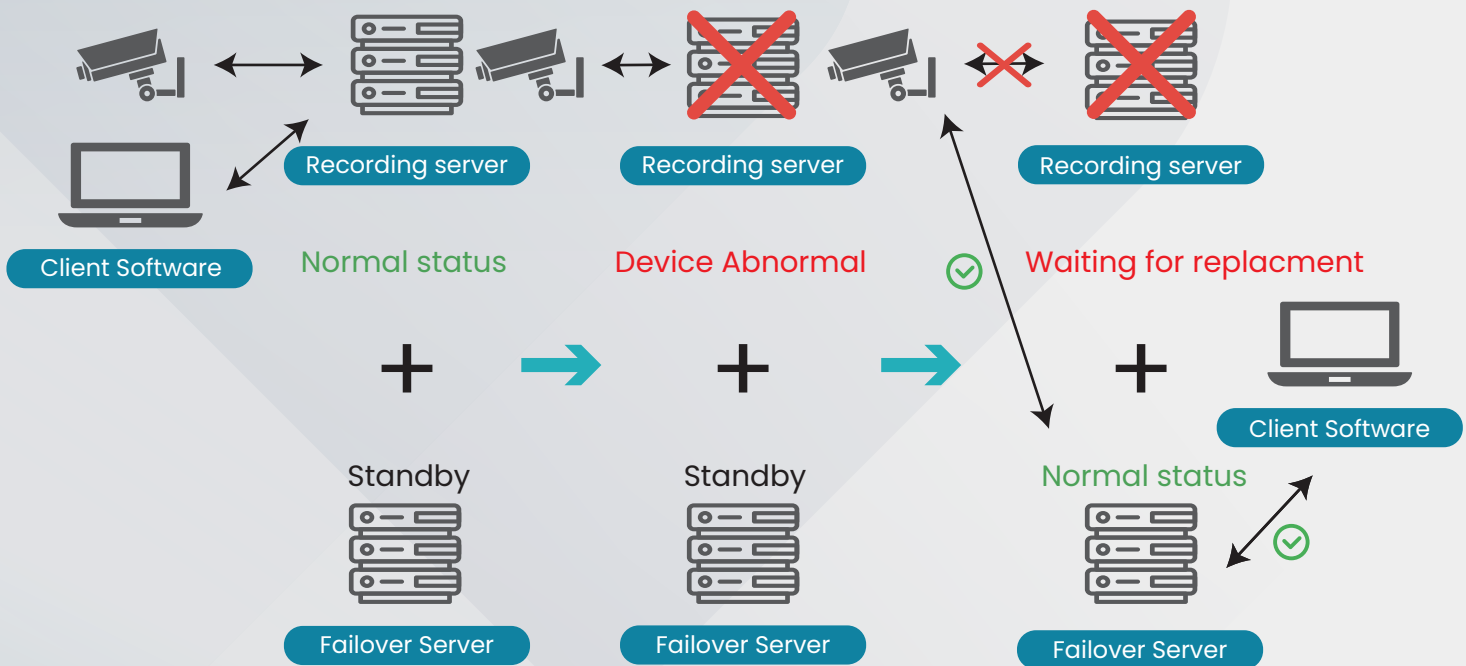




Failover

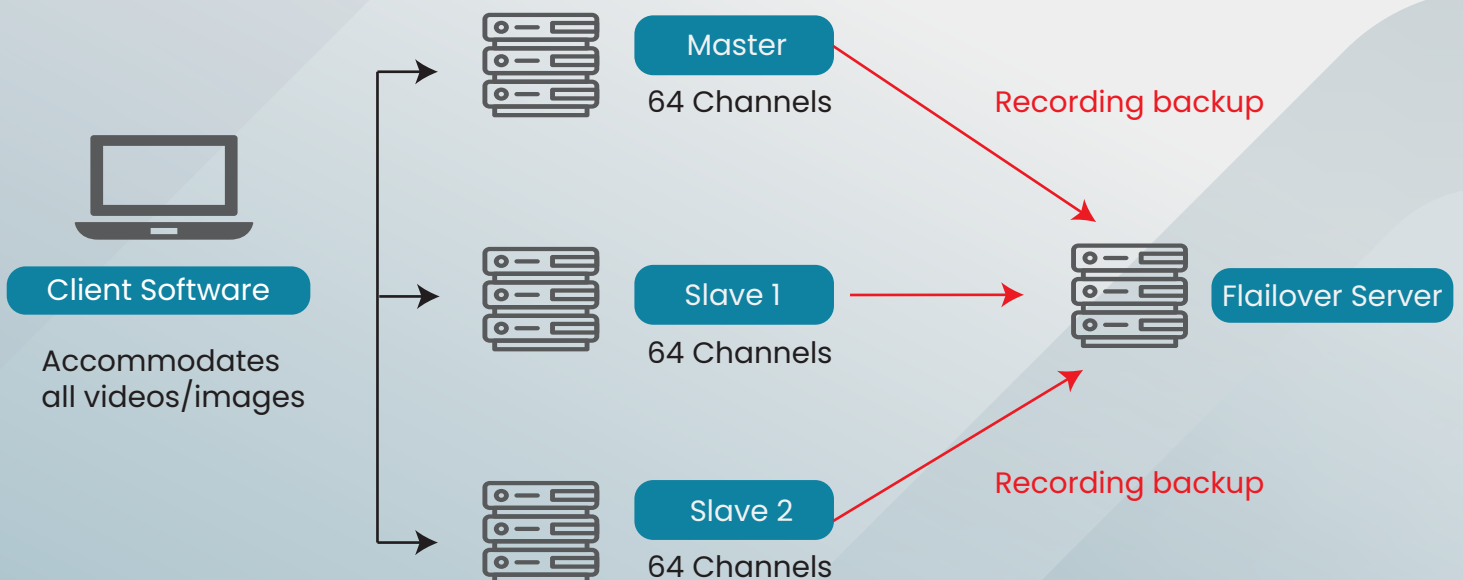
Standalone N+1

When the original recording device malfunctions, the failover server will be activated.



Master/Slave N+1

When any recording server malfunctions, the backup recording device will be activated





Specification

AI Manage-

| | | |
|-------------------|---|--|
| Image Recognition | <ul style="list-style-type: none"> -Human detection / Vehicle detection(car , motorbike , truck,bus , bicycle) -Object detection -Density detection -Loitering detection -Cross-Line detection -Cross-Line counting | <ul style="list-style-type: none"> -Smoke detection (optional) -Fire detection (optional) -License plate recognition (optional) -Vaxtor automatic license plate recognition (optional) |
|-------------------|---|--|

Platform Management

| | | |
|---------------------|--|---|
| Dashboard | <ul style="list-style-type: none"> -Heatmap -Vehicle classification: car , motorbike , truck , bus , bicycle | <ul style="list-style-type: none"> -People counting -Vehicle counting |
| E-map | <ul style="list-style-type: none"> -Unlimited e-map layers -Unlimited device to map -Event pop-up -Real-time display of license plate | <ul style="list-style-type: none"> -Rephase device position -Rephase device angle -Color-coded camera alarm status differentiation |
| Health Doctor | <ul style="list-style-type: none"> -Spark AI failure -Devices failure -Network disconnection | <ul style="list-style-type: none"> -Disk failure -CPU usage critical |
| Alert notifications | <ul style="list-style-type: none"> -E-mail -LINE Notify -Grouped, Scheduled, Customized with content. -LINE notify image (Interval 1-300 secs) | |

General

| | | |
|-------------------|---|---|
| Compatibility | Spark cameras, Omnieye cameras, 3rd party cameras ³ | |
| Operating system | Win 11 IoT , Support for multi-monitor output | |
| Video compression | H.265 , H.264 , MJPEG | |
| Audio support | Two-way audio (client) | |
| Liveview | <ul style="list-style-type: none"> -Liveview -32 channel views (64 chs recording) -Customizable layout -Multi-stream management | <ul style="list-style-type: none"> -Event pop-up -Manual snapshot and recording -PTZ control |
| Recording | <ul style="list-style-type: none"> -64 channel recording (Max. 80 chs) -Continuous/Scheduled recording -Event recording | <ul style="list-style-type: none"> -Edge recover -Event pre/post recording |
| Playback | <ul style="list-style-type: none"> -Customizable layout -Instant playback -Synchronized playback -Date and timeline visualization | <ul style="list-style-type: none"> -Event playback -Playback speed controls -Manual snapshot |
| Export | <ul style="list-style-type: none"> -Export multiple video with selectable time range -Snapshot and videos | <ul style="list-style-type: none"> -support MOV, MKV, MP4, AVI, Spark format -Support watermark |
| Certification | CA / DLAP | |

Event manage-

| | | |
|----------------|--|---|
| Event triggers | <ul style="list-style-type: none"> -Configurable based on device and schedule -AND/OR trigger conditions -Digital input -Camera analytics¹ -AI analytics | <ul style="list-style-type: none"> -System related events -User related events -Device and network related events -Third party events (LPR, eTag) |
| Event actions | <ul style="list-style-type: none"> -Configurable alarm SOP -Configurable alarm recipient -Recording (support Pre/post recording up to 300 secs) -Digital output | <ul style="list-style-type: none"> -LINE notification -PTZ preset -PTZ tour -Linked camera and pop-up image |

Remark:

¹ Only supports assigned camera.

² Applicable to previously integrated camera models.

³ Third party camera compatible through ONVIF and RTSP.



Specification

System management

| | | |
|-------------------------------|--|------------------------------|
| User privilege | -Configurable based on camera, function and schedule | |
| Camera management | -Support basic camera settings | |
| Third party device management | -Supports 24GHz radar, which can be used in conjunction with cameras for perimeter protection. -I/O module -LPR Camera | -eTag reader -LED display |

Server

| | | |
|-----------------------|--|--|
| Model | SR-S-VMS-R2U12 | |
| Processor | -Intel® i5, 6 core, 2.9GHz~4.3GHz -equipped with Smart Cache Memory 12MB | |
| Display interface | -DP/ HDMI -Dedicated Graphics Chip with 2GB Memory | |
| Integrated graphics | - UHD Graphics 630 - HDMI, DP, VGA | |
| I/O port | -USB 3.2 ports ×4 1 PCI E 3.0 ×16 1 PCI E 3.0 ×8 1 PCI E 3.0 ×4 -M.2 Interface: Supports 2280/2242 | |
| Memory | -32GB ECC UDIMM, dual channels(16GB x 2) -DDR-4 3200 MHz, maximum support 128GB | |
| System disk | Dual 256 GB SSDs, RAID 1 | |
| Disk Array (LSI RAID) | Supports RAID 0, 1, 5, 6, 10, 50, 60, JBOD | |
| HDD | Hotswappable. Supports up to 12 2.5/3.5-inch SATA-III hard drives, maximum of 16TB each | |
| Network | RJ-45 Gigabit Ethernet Ports ×2 | |
| Accessories | Rack-mount slides | |
| Power supply | 800W 1+1 80 Plus Hot-swappable | |
| Dimensions | 670mm × 448mm × 88mm (D×W×H) | |
| Certification | CE / FCC / BSMI | |
| Operating Temperature | 0°C ~ 40°C | |